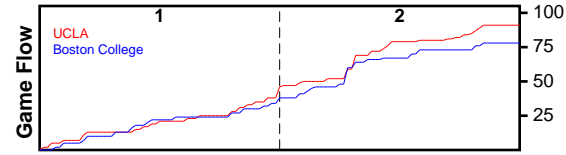


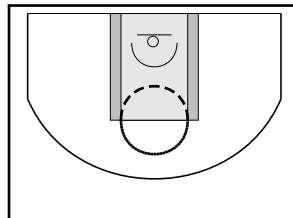
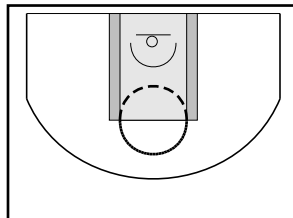
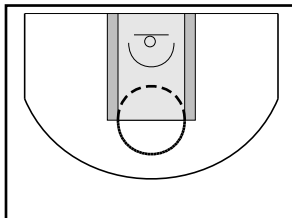
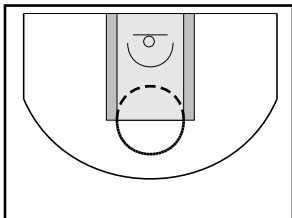
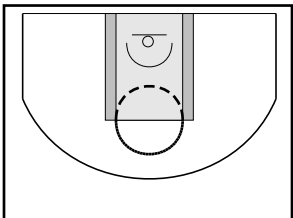
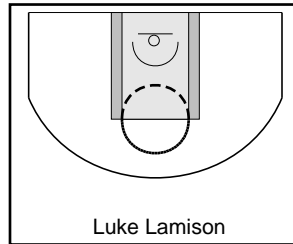
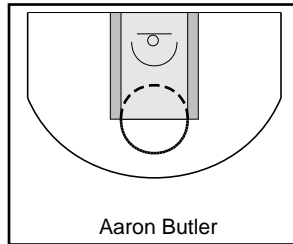
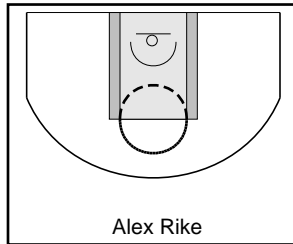
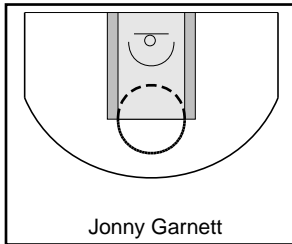
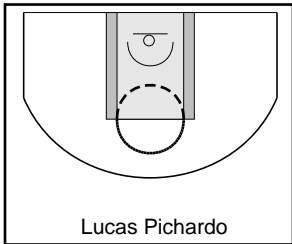
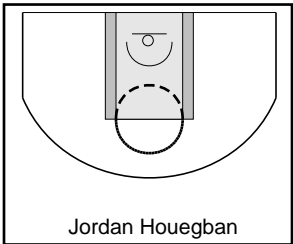
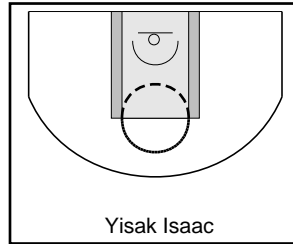
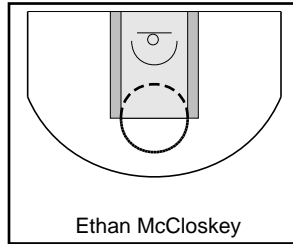
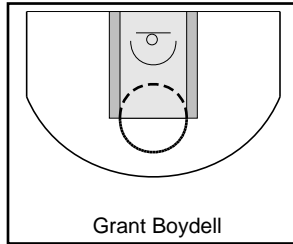
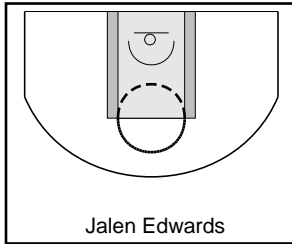
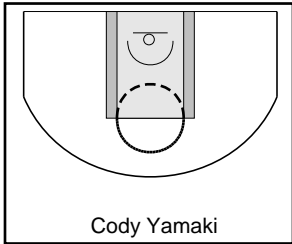
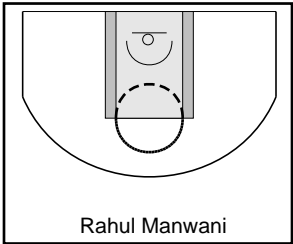
UCLA

4/11/26 UCLA at Boston College

	1	2	T
UCLA	44	47	91
Boston College	38	40	78



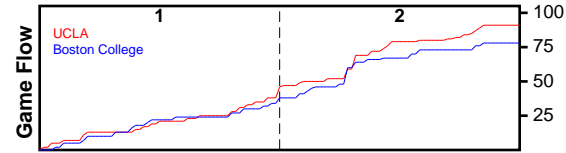
#	Name	G	MIN	PTS	FGM	FGA	FG%	2PM	2PA	2P%	3PM	3PA	3P%	FTM	FTA	FT%	OREB	DREB	REB	AST	STL	DFL	BLK	TO	PF	PM	CHG	A/T	GmSc
1	Rahul Manwani	-	-	0	0	0	-	-	-	-	-	-	-	-	-	-	-	-	0	-	-	-	-	-	-	-	-	-	-
2	Cody Yamaki	1	38	18	5	11	0.455	5	11	0.455	-	-	-	8	9	0.889	1	1	2	5	1	-	-	-	-	9	-	-	17.4
3	Jalen Edwards	1	34	5	2	5	0.400	2	5	0.400	-	-	-	1	4	0.250	-	4	4	2	1	-	-	1	-	8	-	2.0	3.7
5	Grant Boydell	1	5	5	2	3	0.667	1	2	0.500	1	1	1.000	-	-	-	-	2	2	-	-	-	-	1	-	8	-	0.0	3.3
10	Ethan McCloskey	-	-	0	0	0	-	-	-	-	-	-	-	-	-	-	-	-	0	-	-	-	-	-	-	-	-	-	-
10	Yisak Isaac	1	28	15	5	12	0.417	-	5	0.000	5	7	0.714	-	-	-	-	1	1	-	-	-	-	-	11	-	-	8.9	
11	Jordan Houegban	1	35	13	4	14	0.286	2	7	0.286	2	7	0.286	3	4	0.750	-	4	4	2	-	-	1	1	-	6	-	2.0	6.7
13	Lucas Pichardo	-	-	0	0	0	-	-	-	-	-	-	-	-	-	-	-	-	0	-	-	-	-	-	-	-	-	-	-
14	Jonny Garnett	1	40	30	12	14	0.857	12	14	0.857	-	-	-	6	13	0.462	8	8	16	1	1	-	4	-	13	-	-	34.7	
15	Alex Rike	1	8	0	0	0	-	-	-	-	-	-	-	-	-	-	-	-	0	-	-	-	-	-	-6	-	-	0.0	
24	Aaron Butler	-	-	0	0	0	-	-	-	-	-	-	-	-	-	-	-	-	0	-	-	-	-	-	-	-	-	-	-
32	Luke Lamison	-	-	0	0	0	-	-	-	-	-	-	-	-	-	-	-	-	0	-	-	-	-	-	-	-	-	-	-
55	Donald Ryan IV	1	11	2	1	3	0.333	1	2	0.500	-	1	0.000	-	-	-	2	-	2	-	-	-	-	-	13	-	-	1.7	
70	Nathan Muhumuza	-	-	0	0	0	-	-	-	-	-	-	-	-	-	-	-	-	0	-	-	-	-	-	-	-	-	-	-
77	Jayden Xu	1	5	3	1	2	0.500	-	-	-	1	2	0.500	-	-	-	-	-	0	-	-	-	-	-	3	-	-	2.0	
99	Shamar Cook	-	-	0	0	0	-	-	-	-	-	-	-	-	-	-	-	-	0	-	-	-	-	-	-	-	-	-	-
	TEAM	-	-	0	0	0	-	-	-	-	-	-	-	-	-	-	-	-	0	-	-	-	-	-	-	-	-	-	-
	TOTALS	1	40	91	32	64	0.500	23	46	0.500	9	18	0.500	18	30	0.600	11	20	31	10	3	-	5	3	-	13	-	3.3	78.4



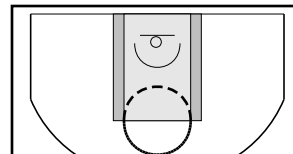
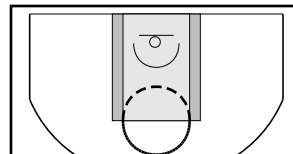
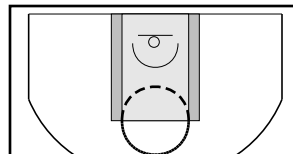
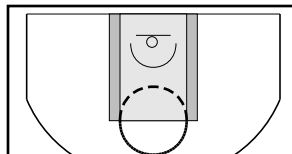
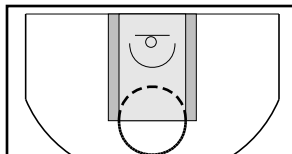
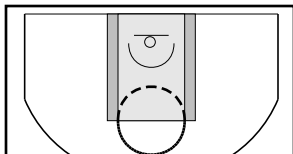
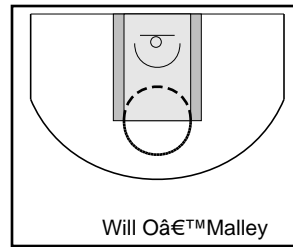
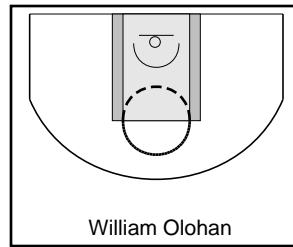
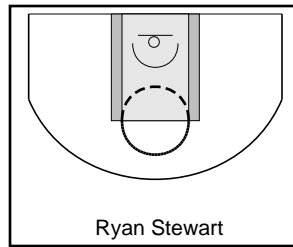
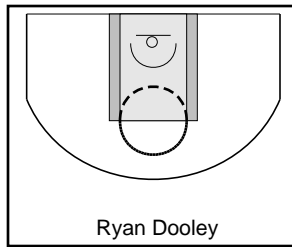
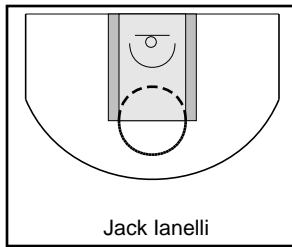
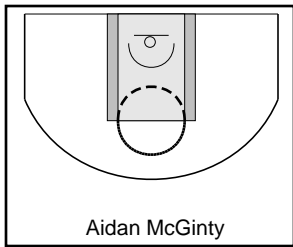
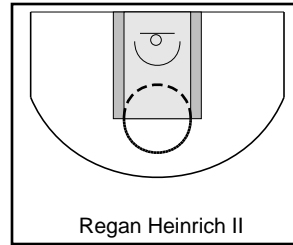
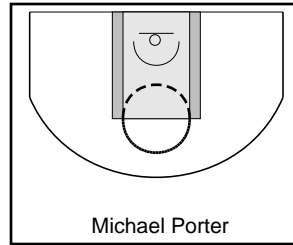
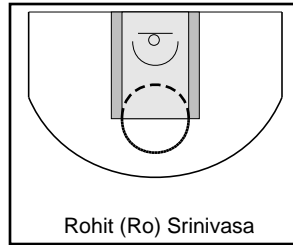
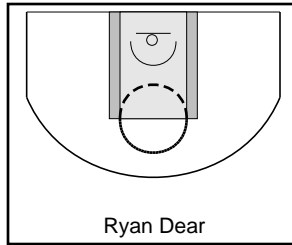
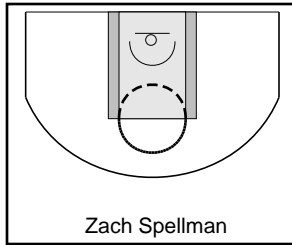
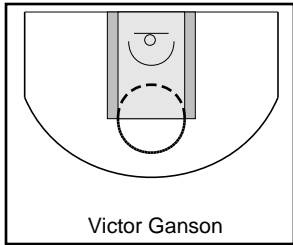
Boston College

4/11/26 UCLA at Boston College

	1	2	T
UCLA	44	47	91
Boston College	38	40	78



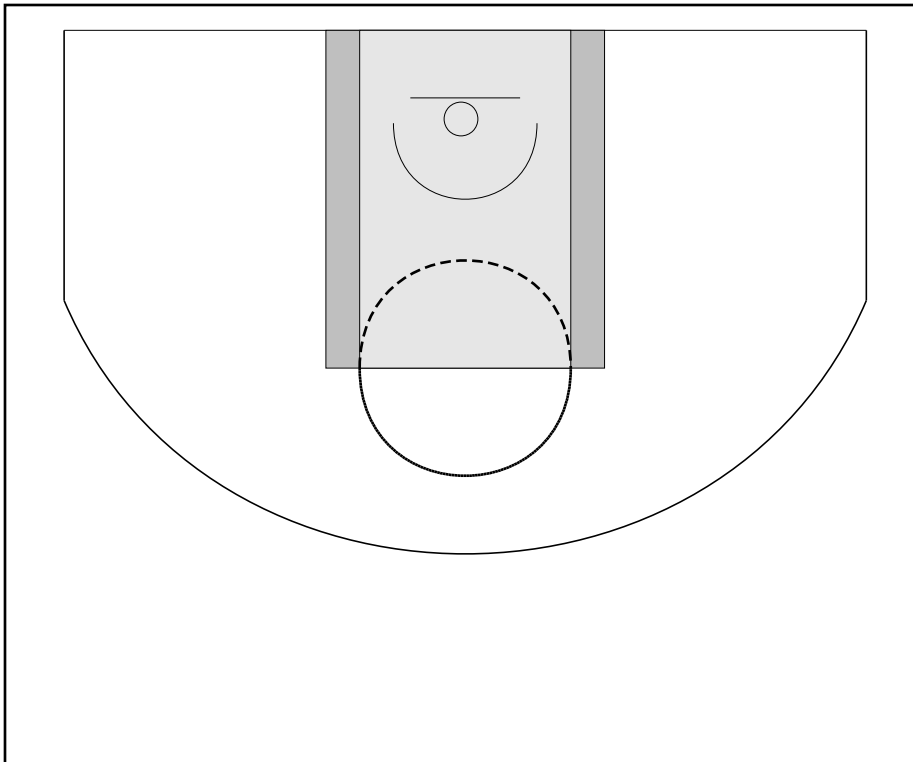
#	Name	G	MIN	PTS	FGM	FGA	FG%	2PM	2PA	2P%	3PM	3PA	3P%	FTM	FTA	FT%	OREB	DREB	REB	AST	STL	DFL	BLK	TO	PF	PM	CHG	A/T	GmSc
0	Victor Ganson	-	-	0	0	0	-	-	-	-	-	-	-	-	-	-	-	-	0	-	-	-	-	-	-	-	-	-	-
1	Zach Spellman	1	29	18	7	18	0.389	5	12	0.417	2	6	0.333	2	2	1.000	-	2	2	-	-	-	-	3	-	-20	-	0.0	5.8
2	Ryan Dear	1	12	7	2	2	1.000	2	2	1.000	-	-	-	3	3	1.000	-	-	0	1	-	-	-	1	-	5	-	1.0	6.1
3	Rohit (Ro) Srinivasa	1	19	8	3	6	0.500	3	5	0.600	-	1	0.000	2	4	0.500	-	1	1	-	-	-	-	1	-	-7	-	0.0	3.5
4	Michael Porter	1	22	11	3	4	0.750	1	1	1.000	2	3	0.667	3	4	0.750	-	1	1	-	-	-	-	1	-	-4	-	0.0	8.3
5	Regan Heinrich II	-	-	0	0	0	-	-	-	-	-	-	-	-	-	-	-	-	0	-	-	-	-	-	-	-	-	-	-
6	Aidan McGinty	-	-	0	0	0	-	-	-	-	-	-	-	-	-	-	-	-	0	-	-	-	-	-	-	-	-	-	-
9	Jack Ianelli	-	-	0	0	0	-	-	-	-	-	-	-	-	-	-	-	-	0	-	-	-	-	-	-	-	-	-	-
10	Ryan Dooley	-	-	0	0	0	-	-	-	-	-	-	-	-	-	-	-	-	0	-	-	-	-	-	-	-	-	-	-
11	Ryan Stewart	-	-	0	0	0	-	-	-	-	-	-	-	-	-	-	-	-	0	-	-	-	-	-	-	-	-	-	-
12	William Olohan	-	-	0	0	0	-	-	-	-	-	-	-	-	-	-	-	-	0	-	-	-	-	-	-	-	-	-	-
15	Will O'Malley	-	-	0	0	0	-	-	-	-	-	-	-	-	-	-	-	-	0	-	-	-	-	-	-	-	-	-	-
22	Dylan Duncan	-	-	0	0	0	-	-	-	-	-	-	-	-	-	-	-	-	0	-	-	-	-	-	-	-	-	-	-
23	Ethan Rhee	1	11	5	2	6	0.333	1	4	0.250	1	2	0.500	-	-	-	-	2	2	1	-	-	-	-	-	-8	-	-	2.9
28	Maxwell (Max) Meyer	1	23	5	2	4	0.500	1	2	0.500	1	2	0.500	-	-	-	2	4	6	-	-	-	-	3	-	4	-	0.0	2.6
32	Edward (Eddie) Cosgrove	1	32	7	3	9	0.333	2	7	0.286	1	2	0.500	-	-	-	-	7	7	3	1	-	-	1	-	-9	-	3.0	6.1
35	eSean Virk	1	34	14	5	13	0.385	3	9	0.333	2	4	0.500	2	2	1.000	5	4	9	-	1	-	2	1	-	-8	-	0.0	13.0
42	William (Will) Doyle	1	23	3	1	2	0.500	1	2	0.500	-	-	-	1	2	0.500	3	2	5	-	-	-	-	-	-	-18	-	-	4.3
	TEAM	-	-	0	0	0	-	-	-	-	-	-	-	-	-	-	-	-	0	-	-	-	-	-	-	-	-	-	-
	TOTALS	1	40	78	28	64	0.438	19	44	0.432	9	20	0.450	13	17	0.765	10	23	33	5	2	-	2	11	-	-13	-	0.5	52.6



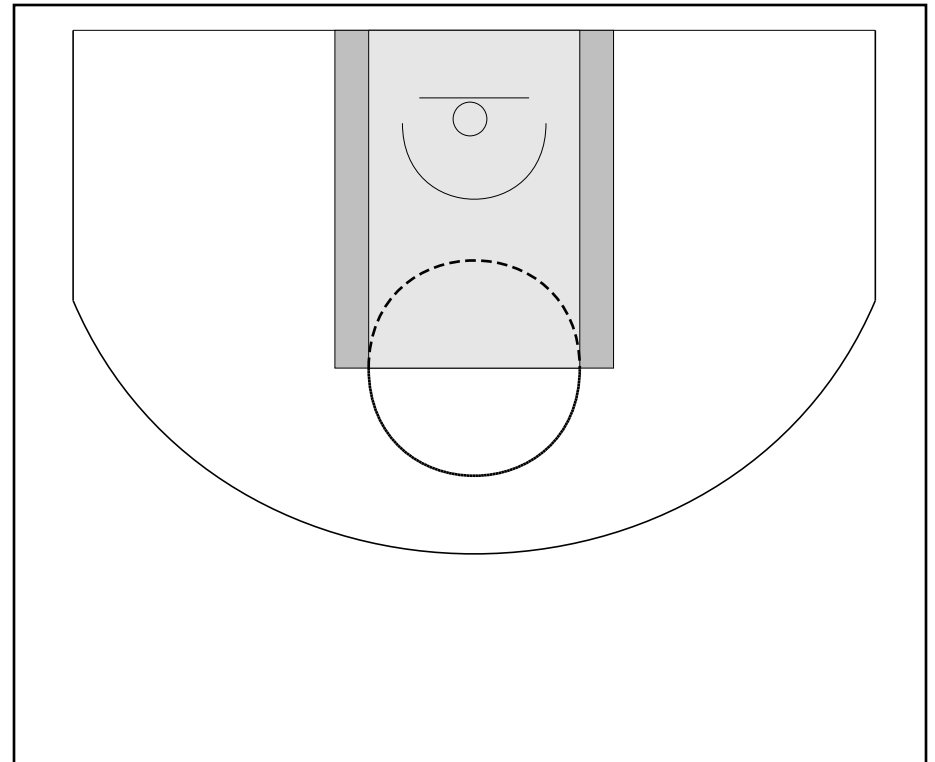
Game Summary Comparison

Statistic	UCLA	Boston College
Points	91	78
<i>Field Goals</i>	32 / 64	28 / 64
<i>2 Point</i>	23 / 46	19 / 44
<i>3 Point</i>	9 / 18	9 / 20
<i>Free Throws</i>	18 / 30	13 / 17
Assists	10	5
Rebounds	31	33
<i>Offensive</i>	11	10
<i>Defensive</i>	20	23
Blocks	5	2
Steals	3	2
Deflections	-	-
Turnovers	3	11
Charges Taken	-	-
Personal Fouls	-	-
Technical Fouls	-	-

UCLA



Boston College



UCLA Turnovers

Period	Clock	Player	Turnover Type
1st Period	0:22	#5 Grant Boydell	Other
1st Period	0:00	#3 Jalen Edwards	Other
2nd Period	14:13	#11 Jordan Houegban	Other

Boston College Turnovers

Period	Clock	Player	Turnover Type
1st Period	19:36	#1 Zach Spellman	Other
1st Period	16:57	#1 Zach Spellman	Other
1st Period	1:15	#2 Ryan Dear	Other
1st Period	0:00	#28 Maxwell (Max) Meyer	Other
2nd Period	18:22	#32 Edward (Eddie) Cosgrove	Other
2nd Period	14:13	#35 eSean Virk	Other
2nd Period	14:13	#3 Rohit (Ro) Srinivasa	Other
2nd Period	14:13	#28 Maxwell (Max) Meyer	Other
2nd Period	14:13	#4 Michael Porter	Other
2nd Period	13:29	#28 Maxwell (Max) Meyer	Other
2nd Period	4:36	#1 Zach Spellman	Other