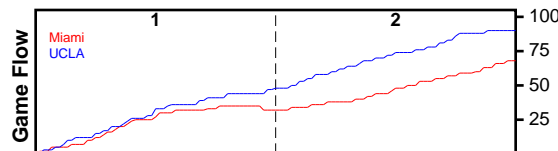


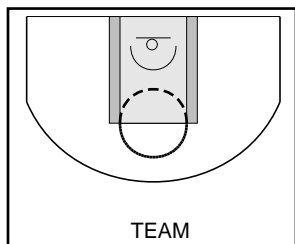
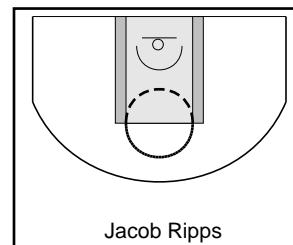
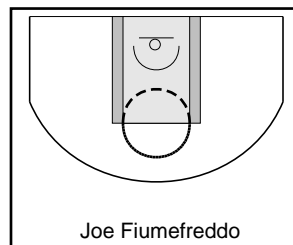
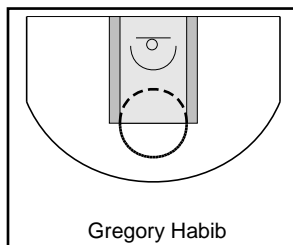
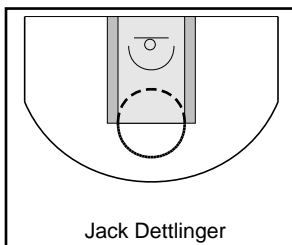
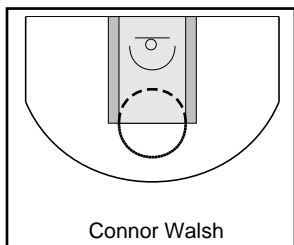
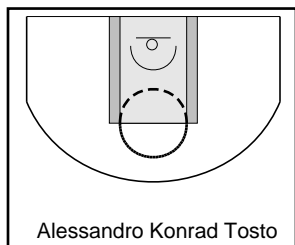
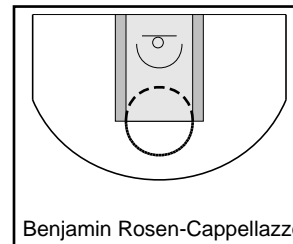
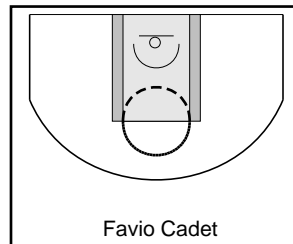
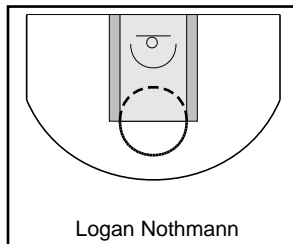
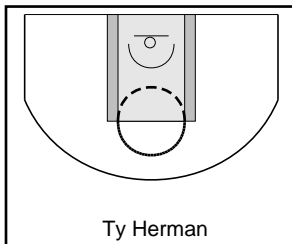
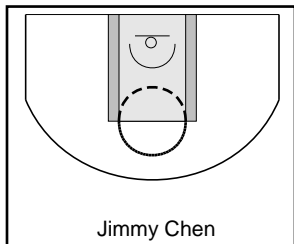
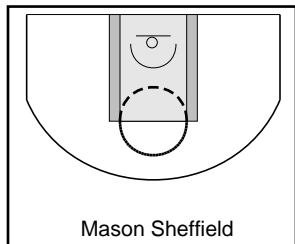
Miami

4/19/24 Miami at UCLA

	1	2	T
Miami	32	36	68
UCLA	47	43	90



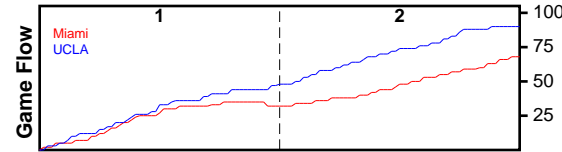
#	Name	G	MIN	PTS	FGM	FGA	FG%	2PM	2PA	2P%	3PM	3PA	3P%	FTM	FTA	FT%	OREB	DREB	REB	AST	STL	DFL	BLK	TO	PF	PM	CHG	A/T	GmSc
0	Mason Sheffield	1	38	34	15	23	0.652	14	19	0.737	1	4	0.250	3	4	0.750	1	1	2	2	-	-	2	-	-	-15	-	-	27.3
3	Jimmy Chen	1	17	3	1	5	0.200	-	3	0.000	1	2	0.500	-	-	-	-	-	0	1	1	-	-	-	-1	-	-	1.6	
3	Ty Herman	1	2	0	0	0	-	-	-	-	-	-	-	-	-	-	-	-	0	-	-	-	-	-	-	-	-	0.0	
7	Logan Nothmann	1	32	9	4	10	0.400	3	7	0.429	1	3	0.333	-	-	-	-	1	1	-	2	-	-	-	-13	-	-	5.9	
7	Favio Cadet	1	11	0	0	1	0.000	-	1	0.000	-	-	-	-	-	-	-	-	0	-	-	-	-	-	-3	-	-	-0.7	
0	Benjamin Rosen-Cappellazzo	-	-	0	0	0	-	-	-	-	-	-	-	-	-	-	-	-	0	-	-	-	-	-	-	-	-	-	
1	Alessandro Konrad Tosto	1	25	2	1	4	0.250	1	4	0.250	-	-	-	-	-	-	1	2	3	2	-	-	2	-	-	-13	-	-	3.7
1	Connor Walsh	1	33	11	4	6	0.667	3	4	0.750	1	2	0.500	2	2	1.000	4	2	6	-	1	-	4	-	-	-9	-	-	15.6
4	Jack Dettlinger	-	-	0	0	0	-	-	-	-	-	-	-	-	-	-	-	-	0	-	-	-	-	-	-	-	-	-	
4	Gregory Habib	1	12	1	0	2	0.000	-	2	0.000	-	-	-	1	2	0.500	-	1	1	-	-	-	-	-	-	-8	-	-	-0.5
4	Joe Fiumefreddo	1	35	8	3	11	0.273	2	8	0.250	1	3	0.333	1	2	0.500	2	2	4	2	1	-	-	-	-18	-	-	5.5	
9	Jacob Ripps	-	-	0	0	0	-	-	-	-	-	-	-	-	-	-	-	-	0	-	-	-	-	-	-	-	-	-	
	TEAM	-	-	0	0	0	-	-	-	-	-	-	-	-	-	-	-	-	0	-	-	-	-	-	-	-	-	-	
	TOTALS	1	40	68	28	62	0.452	23	48	0.479	5	14	0.357	7	10	0.700	8	9	17	7	5	-	8	-	-	-22	-	-	58.4



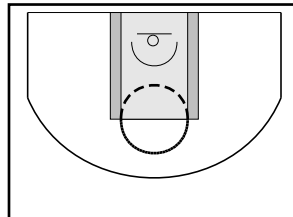
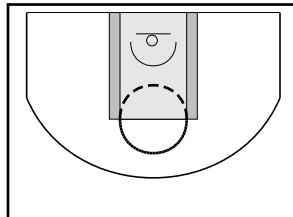
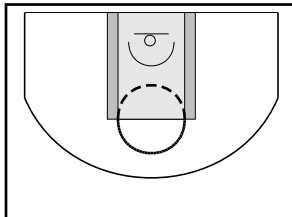
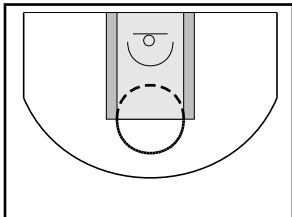
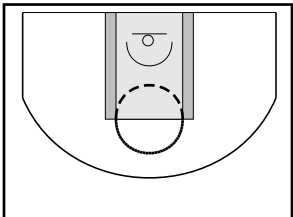
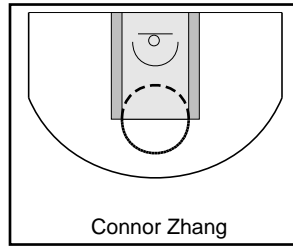
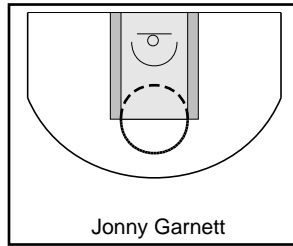
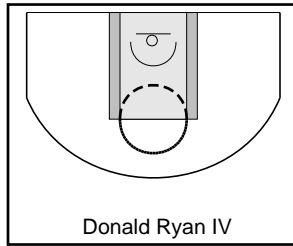
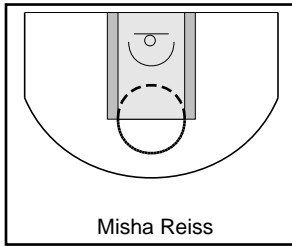
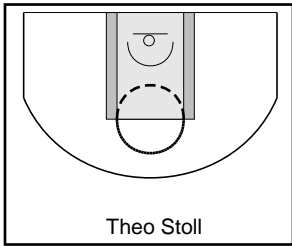
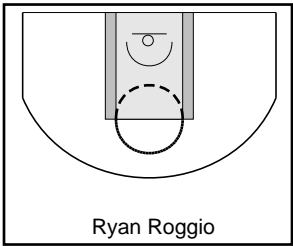
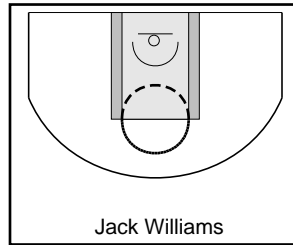
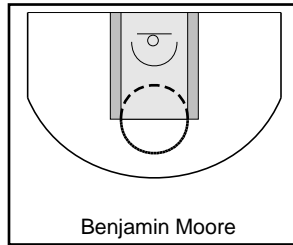
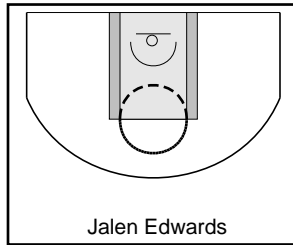
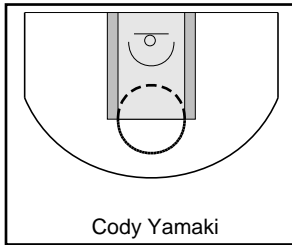
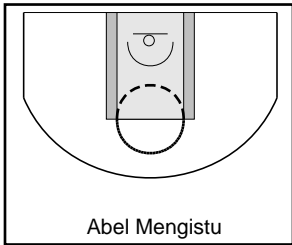
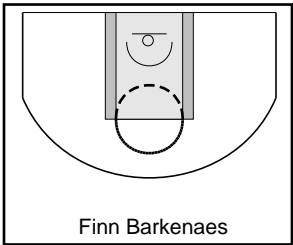
UCLA

4/19/24 Miami at UCLA

	1	2	T
Miami	32	36	68
UCLA	47	43	90



#	Name	G	MIN	PTS	FGM	FGA	FG%	2PM	2PA	2P%	3PM	3PA	3P%	FTM	FTA	FT%	OREB	DREB	REB	AST	STL	DFL	BLK	TO	PF	PM	CHG	A/T	GmSc
0	Finn Barkenaes	1	12	4	2	3	0.667	2	2	1.000	-	1	0.000	-	-	-	2	1	3	-	-	-	1	-	-	-3	-	-	5.1
1	Abel Mengistu	1	5	2	1	1	1.000	1	1	1.000	-	-	-	-	-	-	-	-	0	-	-	-	-	-	-	-5	-	-	1.7
2	Cody Yamaki	1	27	8	4	8	0.500	4	7	0.571	-	1	0.000	-	1	0.000	1	-	1	3	2	-	-	-	-	23	-	-	8.4
3	Jalen Edwards	1	17	4	2	4	0.500	2	4	0.500	-	-	-	-	-	-	-	2	2	2	1	-	-	-	-	3	-	-	5.0
4	Benjamin Moore	1	8	2	1	1	1.000	1	1	1.000	-	-	-	-	-	-	-	2	2	-	-	-	-	-	-	1	-	-	2.3
5	Jack Williams	1	29	24	8	14	0.571	1	1	1.000	7	13	0.538	1	2	0.500	-	4	4	1	1	-	1	-	-	23	-	-	20.6
6	Ryan Roggio	1	6	2	1	1	1.000	1	1	1.000	-	-	-	-	-	-	-	-	0	-	-	-	-	-	-	-2	-	-	1.7
9	Theo Stoll	-	-	0	0	0	-	-	-	-	-	-	-	-	-	-	-	-	0	-	-	-	-	-	-	-	-	-	-
12	Misha Reiss	1	26	11	5	8	0.625	5	7	0.714	-	1	0.000	1	2	0.500	-	2	2	1	-	-	-	-	-	17	-	-	8.3
13	Donald Ryan IV	1	10	4	2	2	1.000	2	2	1.000	-	-	-	-	-	-	-	4	4	-	-	-	-	-	-	-10	-	-	4.6
14	Jonny Garnett	1	25	12	6	10	0.600	6	10	0.600	-	-	-	-	-	-	9	7	16	1	-	-	1	-	-	24	-	-	17.2
15	Connor Zhang	-	-	0	0	0	-	-	-	-	-	-	-	-	-	-	-	-	0	-	-	-	-	-	-	-	-	-	-
21	Christopher Fowler	-	-	0	0	0	-	-	-	-	-	-	-	-	-	-	-	-	0	-	-	-	-	-	-	-	-	-	-
22	Jake Kremer	1	24	11	4	9	0.444	1	1	1.000	3	8	0.375	-	-	-	-	2	2	-	-	-	-	-	-	17	-	-	6.9
23	Keahi Brumsickle Sr.	1	6	3	1	1	1.000	-	-	-	1	1	1.000	-	-	-	-	-	0	-	1	-	-	-	-	-2	-	-	3.7
53	Evan Oâ€™Brien	1	11	3	1	3	0.333	-	-	-	1	3	0.333	-	-	-	-	-	0	2	-	-	-	-	-	-6	-	-	2.7
	TEAM	-	-	0	0	0	-	-	-	-	-	-	-	-	-	-	-	-	0	-	-	-	-	-	-	-	-	-	-
	TOTALS	1	40	90	38	65	0.585	26	37	0.703	12	28	0.429	2	5	0.400	12	24	36	10	5	-	3	-	-	22	-	-	88.2



Game Summary Comparison

Statistic	Miami	UCLA
Points	68	90
<i>Field Goals</i>	28 / 62	38 / 65
<i>2 Point</i>	23 / 48	26 / 37
<i>3 Point</i>	5 / 14	12 / 28
<i>Free Throws</i>	7 / 10	2 / 5
Assists	7	10
Rebounds	17	36
<i>Offensive</i>	8	12
<i>Defensive</i>	9	24
Blocks	8	3
Steals	5	5
Deflections	-	-
Turnovers	-	-
Charges Taken	-	-
Personal Fouls	-	-
Technical Fouls	-	-

Miami



UCLA

