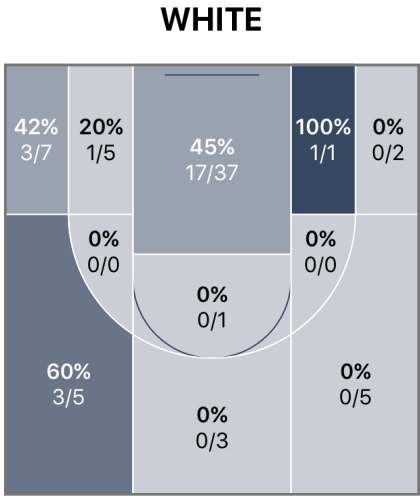
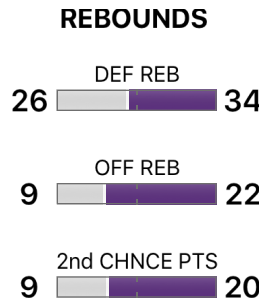
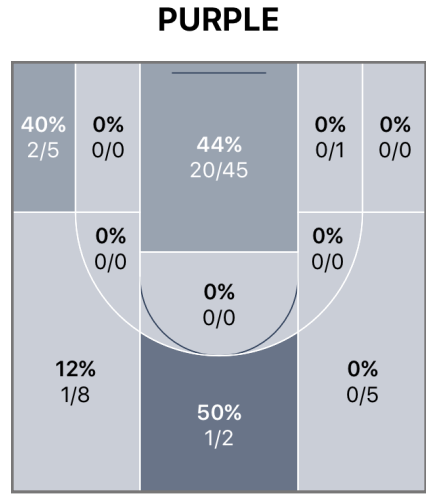


WHITE **76** Game Stats **65** PURPLE

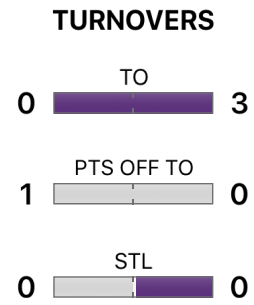


	1	2
WHITE	24	52
PURPLE	31	34



**POINTS**

WHITE	PURPLE
38% FG%	36% FG%
27% 3PT FG%	19% 3PT FG%
83% FT%	57% FT%
34 PTS IN PAINT	40 PTS IN PAINT



**Team Totals**


	FGM-A	3PM-A	FTM-A	PIP	OREB	DREB	REB	2CP	AST	STL	POT	BLK	TO	PF	PTS
SYRACUSE UNI...	25-66	6-22	20-24	34	9	26	35	9	2	0	1	0	0	21	76
VIRGINIA TECH	24-67	4-21	13-23	40	22	34	56	20	3	0	0	4	3	19	65

FGM-A - Field Goal Makes/Attempts  
 3PM-A - 3 Point Makes/Attempts  
 FTM-A - Free Throw Makes/Attempts  
 PIP - Points in the Paint  
 OREB - Offensive Rebounds  
 DREB - Defensive Rebounds  
 REB - Rebounds  
 2CP - 2nd Chance Points  
 AST - Assists  
 STL - Steals  
 POT - Points off Turnovers  
 BLK - Blocks  
 TO - Turnovers  
 PF - Personal & Technical Fouls  
 PTS - Total Points

# Syracuse University 76 - 65 Virginia Tech

 Home

 Postseason

 Saturday, April 11, 2015

## Syracuse University Stats

PLAYERS	FGM-A	3PM-A	FTM-A	PIP	OREB	DREB	REB	2CP	AST	STL	POT	BLK	TO	PF	PTS ▾
#11, J Garofalo	8-15	1-4	4-5	14	0	2	2	2	0	0	0	0	0	4	<b>21</b>
#3, S Acheampong	4-9	1-1	9-10	6	2	8	10	2	1	0	1	0	0	0	<b>18</b>
#14, S Eggleston	5-10	1-2	2-2	8	2	1	3	2	1	0	0	0	0	4	<b>13</b>
#1, J Jenkins	3-14	0-4	4-6	2	0	1	1	2	0	0	0	0	0	4	<b>10</b>
#24, A Duron	2-2	1-1	0-0	2	0	2	2	0	0	0	0	0	0	4	<b>5</b>
#21, A Shea	1-8	0-4	1-1	2	1	0	1	1	0	0	0	0	0	1	<b>3</b>
#34, K Reese	1-1	1-1	0-0	0	0	0	0	0	0	0	0	0	0	1	<b>3</b>
#5, D Lowther	0-2	0-2	0-0	0	0	6	6	0	0	0	0	0	0	3	<b>0</b>
#15, S Linabury	0-0	0-0	0-0	0	0	0	0	0	0	0	0	0	0	0	<b>0</b>
Unassigned/Team	1-5	1-3	0-0	0	4	6	10	0	0	0	0	0	0	0	<b>3</b>
<b>Total</b>	<b>25-66</b>	<b>6-22</b>	<b>20-24</b>	<b>34</b>	<b>9</b>	<b>26</b>	<b>35</b>	<b>9</b>	<b>2</b>	<b>0</b>	<b>1</b>	<b>0</b>	<b>0</b>	<b>21</b>	<b>76</b>

### FLAGRANT FOULS

WHITE TEAM None


### TECHNICAL FOULS

WHITE TEAM None

# Syracuse University **76 - 65** Virginia Tech

 Home

 Postseason

 Saturday, April 11, 2015

## Virginia Tech Stats

PLAYERS	FGM-A	3PM-A	FTM-A	PIP	OREB	DREB	REB	2CP	AST	STL	POT	BLK	TO	PF	PTS ▾
#32, E Burton	5-9	1-4	4-7	8	1	2	3	5	0	0	0	0	0	4	<b>15</b>
#4, C Einsmann	3-16	2-7	4-4	2	1	8	9	2	1	0	0	0	0	1	<b>12</b>
#`12, J Ryan	5-14	0-0	2-5	10	4	8	12	4	1	0	0	1	0	1	<b>12</b>
#16, C Perreault	5-8	0-0	0-2	10	3	0	3	4	0	0	0	0	1	4	<b>10</b>
#33, C Dowd	4-4	0-0	0-2	8	3	3	6	4	0	0	0	2	2	4	<b>8</b>
#9, C Einsmann	1-5	0-1	2-2	2	1	2	3	0	1	0	0	0	0	3	<b>4</b>
#30, K Dillard	1-8	1-6	0-0	0	1	4	5	0	0	0	0	1	0	2	<b>3</b>
Unassigned/Team	0-3	0-3	1-1	0	8	7	15	1	0	0	0	0	0	0	<b>1</b>
<b>Total</b>	<b>24-67</b>	<b>4-21</b>	<b>13-23</b>	<b>40</b>	<b>22</b>	<b>34</b>	<b>56</b>	<b>20</b>	<b>3</b>	<b>0</b>	<b>0</b>	<b>4</b>	<b>3</b>	<b>19</b>	<b>65</b>

### FLAGRANT FOULS

PURPLE TEAM None

### TECHNICAL FOULS

PURPLE TEAM None