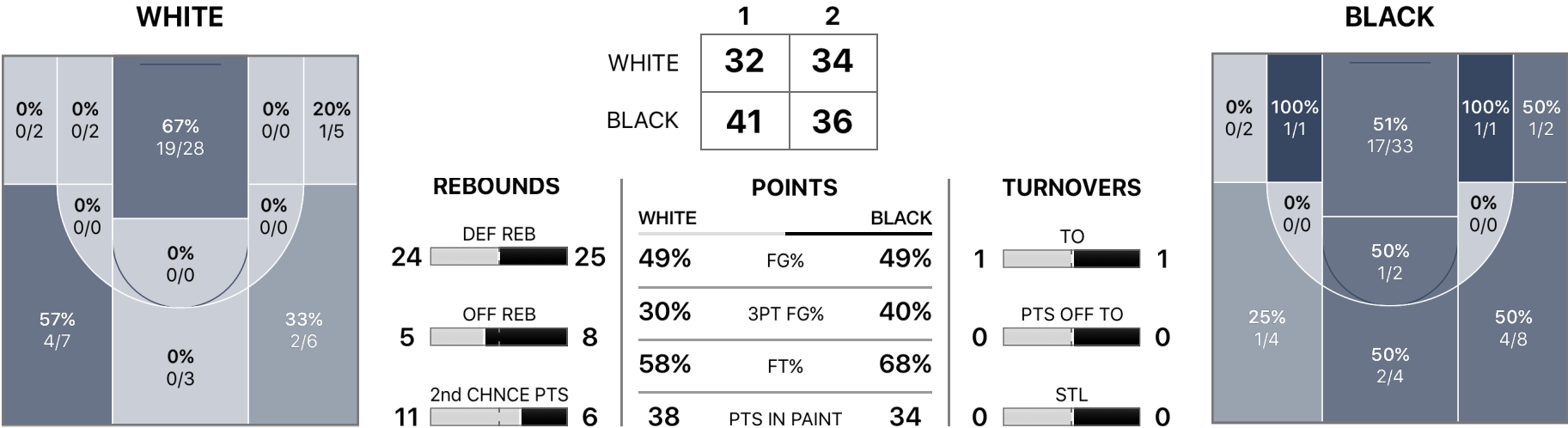


# Spartans 66 - 77 Purdue

Home Postseason Saturday, April 08, 2017

**WHITE 66**      **Game Over**      **77 BLACK**



## Team Totals

	FGM-A	3PM-A	FTM-A	PIP	OREB	DREB	REB	2CP	AST	STL	POT	BLK	TO	PF	PTS
<b>SPARTANS</b>	26-53	7-23	7-12	38	5	24	29	11	0	0	0	0	1	19	66
<b>PURDUE</b>	28-57	8-20	13-19	34	8	25	33	6	0	0	0	0	1	15	77

FGM-A - Field Goal Makes/Attempts	OREB - Offensive Rebounds	AST - Assists	TO - Turnovers
3PM-A - 3 Point Makes/Attempts	DREB - Defensive Rebounds	STL - Steals	PF - Personal & Technical Fouls
FTM-A - Free Throw Makes/Attempts	REB - Rebounds	POT - Points off Turnovers	PTS - Total Points
PIP - Points in the Paint	2CP - 2nd Chance Points	BLK - Blocks	

# Spartans 66 - 77 Purdue



Home



Postseason



Saturday, April 08, 2017

## Spartans Stats

PLAYERS	FGM-A	3PM-A	FTM-A	PIP	OREB	DREB	REB	2CP	AST	STL	POT	BLK	TO	PF	PTS
#24, P Zwemmer	10-11	1-2	0-0	18	0	3	3	3	0	0	0	0	1	2	21
#3, R Ray Jr.	5-15	2-8	5-6	6	1	3	4	3	0	0	0	0	0	3	17
#15, A Burmeister	2-6	2-6	0-0	0	1	4	5	0	0	0	0	0	0	1	6
#2, N Zugaro	3-5	0-0	0-0	6	0	4	4	0	0	0	0	0	0	3	6
#5, A Hourani	1-1	1-1	2-3	0	0	0	0	2	0	0	0	0	0	2	5
#0, T Morris	2-8	0-3	0-0	4	0	3	3	0	0	0	0	0	0	2	4
#1, S Hunt	1-2	1-2	0-0	0	0	0	0	3	0	0	0	0	0	0	3
#25, P Goldemberg	1-1	0-0	0-3	2	0	1	1	0	0	0	0	0	0	4	2
#32, B Erickson	1-1	0-0	0-0	2	0	2	2	0	0	0	0	0	0	1	2
#22, D Veltema	0-0	0-0	0-0	0	0	0	0	0	0	0	0	0	0	0	0
#10, J Dasuqi	0-0	0-0	0-0	0	0	0	0	0	0	0	0	0	0	1	0
#33, J Bricker	0-0	0-0	0-0	0	0	0	0	0	0	0	0	0	0	0	0
#12, S Sammons	0-0	0-0	0-0	0	0	0	0	0	0	0	0	0	0	0	0
Unassigned/Team	0-3	0-1	0-0	0	3	4	7	0	0	0	0	0	0	0	0
<b>Total</b>	<b>26-53</b>	<b>7-23</b>	<b>7-12</b>	<b>38</b>	<b>5</b>	<b>24</b>	<b>29</b>	<b>11</b>	<b>0</b>	<b>0</b>	<b>0</b>	<b>0</b>	<b>1</b>	<b>19</b>	<b>66</b>

### FLAGRANT FOULS

WHITE TEAM None

### TECHNICAL FOULS

WHITE TEAM None

# Spartans 66 - 77 Purdue



Home



Postseason



Saturday, April 08, 2017

## Purdue Stats

PLAYERS	FGM-A	3PM-A	FTM-A	PIP	OREB	DREB	REB	2CP	AST	STL	POT	BLK	TO	PF	PTS ▾
#21, T Young	8-14	5-8	0-0	6	0	3	3	4	0	0	0	0	0	1	<b>21</b>
#7, C Dunn	7-13	3-6	3-4	4	2	6	8	0	0	0	0	0	0	2	<b>20</b>
#0, J Thomas	4-11	0-2	5-7	8	0	3	3	2	0	0	0	0	0	4	<b>13</b>
#1, M Montgomery	5-7	0-0	0-2	10	1	3	4	0	0	0	0	0	1	1	<b>10</b>
#33, T Howat	2-5	0-3	2-3	4	1	4	5	0	0	0	0	0	0	3	<b>6</b>
#22, B Gross	2-4	0-0	2-2	2	0	3	3	0	0	0	0	0	0	3	<b>6</b>
#14, R Naylor	0-0	0-0	0-0	0	0	1	1	0	0	0	0	0	0	1	<b>0</b>
#13, S Chemma	0-1	0-1	0-0	0	0	0	0	0	0	0	0	0	0	0	<b>0</b>
Unassigned/Team	0-2	0-0	1-1	0	4	2	6	0	0	0	0	0	0	0	<b>1</b>
<b>Total</b>	<b>28-57</b>	<b>8-20</b>	<b>13-19</b>	<b>34</b>	<b>8</b>	<b>25</b>	<b>33</b>	<b>6</b>	<b>0</b>	<b>0</b>	<b>0</b>	<b>0</b>	<b>1</b>	<b>15</b>	<b>77</b>

### FLAGRANT FOULS

BLACK TEAM None

### TECHNICAL FOULS

BLACK TEAM None